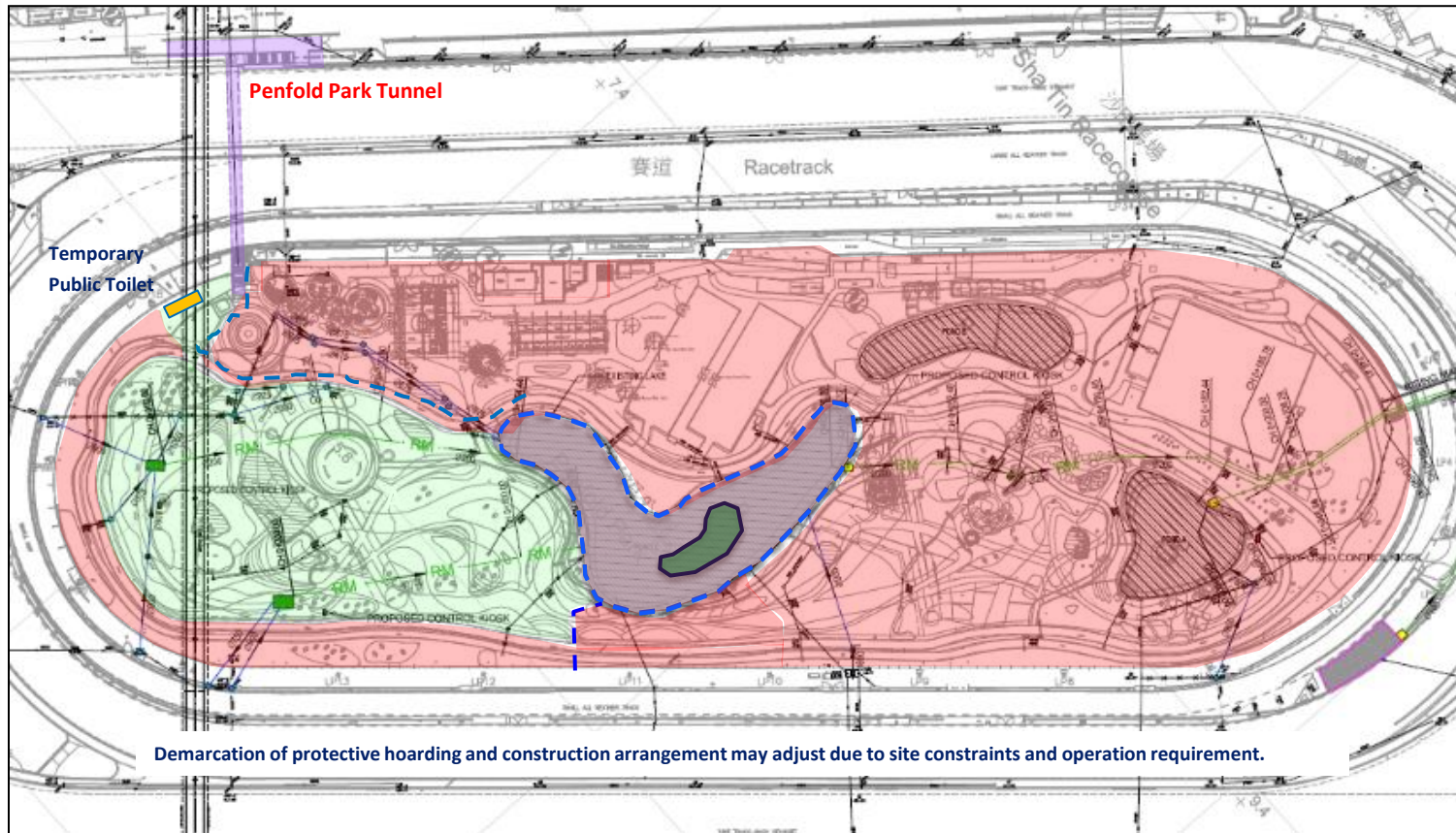


# \*CONSTRUCTION PHASE 2 – JUL 2024 TO DEC 2025 (17 MONTHS)



- Construction Area (No access to public)
- Open to Public
- Construction by phase (Partially open for public access)
- Tree Island
- Protective hoarding / barrier

Demarcation of protective hoarding and construction arrangement may adjust due to site constraints and operation requirement.

\* Tentative construction period